

350n

SHEAR BEAM LOAD CELL FOR INDUSTRIAL WEIGHING

capacities 300kg - 2000kg



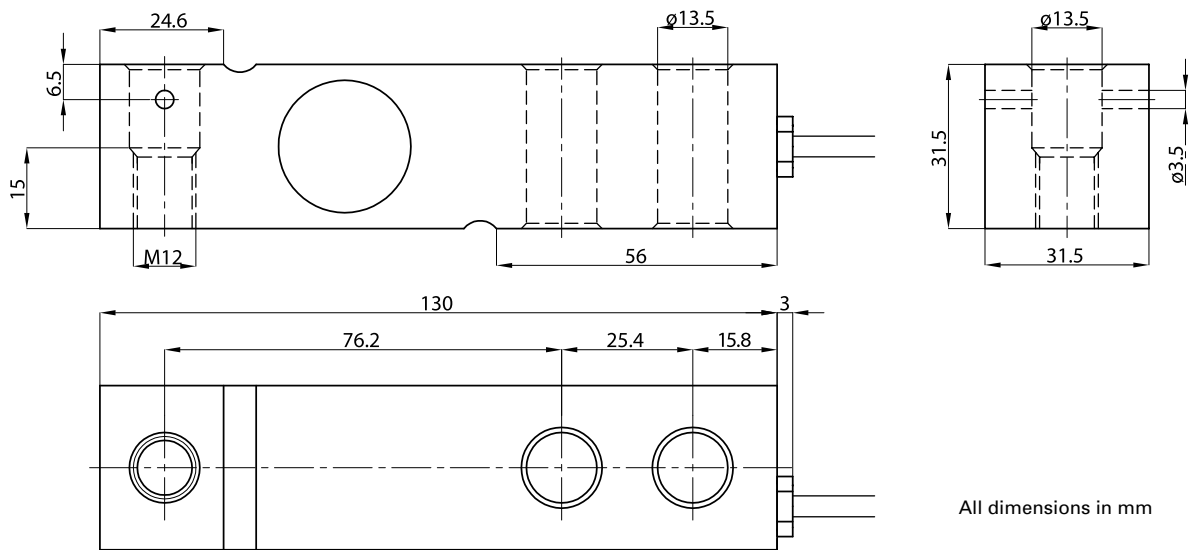
This low cost shear beam load cell is ideal for applications where fully welded, hermetically sealed products are not required. It is manufactured from alloy steel and nickel plated, with the strain gauged pockets protected by a silicone compound for protection to IP66.

This cell is typically used in weighing platforms, tank and vessel weighing, big-bag (FIBC) filling machines and conveyors. It is approved to OIML R60 3000 divisions and calibrated in mV/V/ Ω by output current matching – which minimises corner correction time on multi-cell platform scales.

- Nickel plated steel alloy load sensor
- Cost effective
- Silicone sealed to IP66
- 3000 divisions OIML R60 Class C approval
- Simple low cost installation
- Calibrated in mV/V/ Ω
- 5 year warranty
- Industry standard configuration
- Optional load feet and mounting plates
- Optional anti-vibration loading assembly

350n

technical specification...



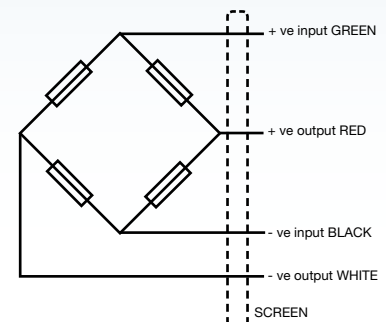
All dimensions in mm

350n Load Cell

	Load cell specification	Units
Load Cell Capacities	300, 500, 750, 1000, 1500, 2000	kg
Rated Output	2	mV/V**
Accuracy Class	3000	n.OIML
Combined Error	< +/- 0.017	%*
Non-repeatability	< +/- 0.015	%*
Creep (30 minutes)	< +/- 0.016	%*
Temperature Effect on Zero Balance	< +/- 0.002	%* / °C
Temperature Effect on Span	< +/- 0.0012	%* / °C
Compensated Temperature Range	-10 to +40	°C
Operating Temperature Range	-30 to +70	°C
Safe Overload	150	%*
Ultimate Overload	200	%*
Zero Balance	< +/- 2	%*
Input Resistance	400	Ω +/- 20
Output Resistance	350	Ω +/- 3
Insulation Resistance	> 5000	MΩ @ 100V
Recommended Supply Voltage	10	V
Maximum Supply Voltage	15	V
Environmental Protection	IP66	
Cable length	5	m
Cable Material	PVC	
Maximum deflection at full load	0.2 to 0.4	mm
Nominal Shipping Weight	0.9	kg

*With respect to rated output

** Pre-corner adjustment optimised at +/- 0.05% by output current calibration



Electrical Connections

Via 4 wire, 6mm diameter, screened PVC cable.
Screen not connected electrically to load cell.

DISTRIBUTED BY:



THAMES SIDE SENSORS LTD

Unit 10, io Trade Centre, Deacon Way,
Reading, Berkshire RG30 6AZ

tel: +44 (0) 118 941 1387

fax: +44 (0) 118 941 2004

sales@thames-side.co.uk

www.thames-side.com

Issue: 350n.01.16



Our policy is one of continuous product enhancement. We therefore reserve the right to incorporate technical modifications without prior notification.

