

# SHEAR BEAM LOAD CELL FOR PLATFORM SCALES IN HARSH ENVIRONMENTS

*capacities 300kg - 2000kg*



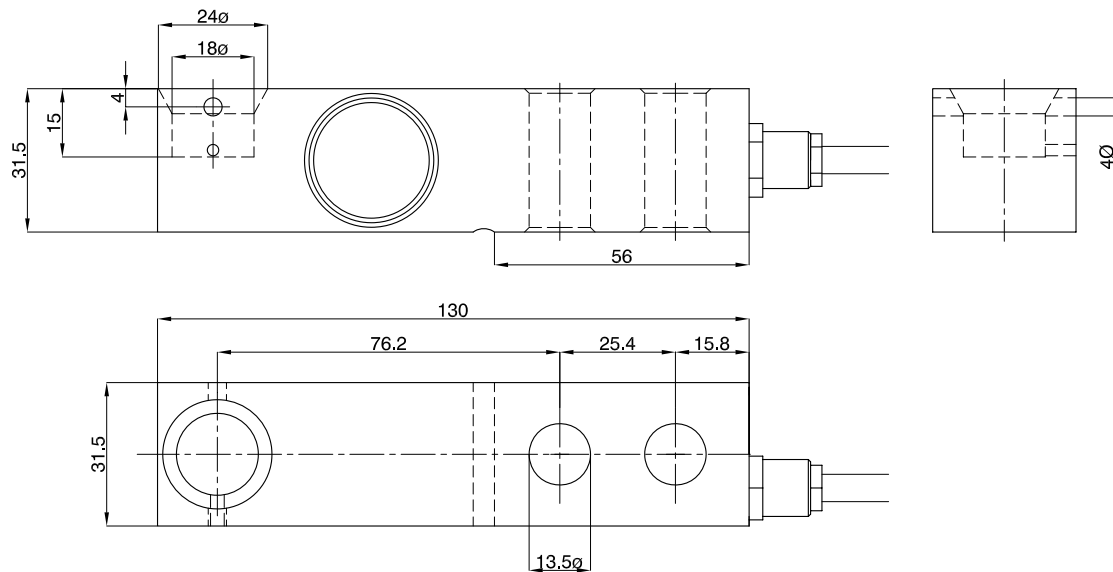
This fully welded shear beam load cell is fully welded and hermetically sealed to IP68/IP69K and has been designed for use in high accuracy 4-cell platform scales in the harshest industrial environments. Calibration in mV/V/ $\Omega$  (by output current matching) minimises the need for time consuming platform corner correction. It is approved to OIML R60 Class C3, with a blind loading hole and a durable Polyurethane cable. Polyurethane provides greater resistance than PVC to chemicals, UV radiation, temperature changes and impacts.

For applications in aggressive environments where stress corrosion or acid attack is an issue, a special Parylene coating can be specified as an option to provide greater protection of the load cell.

- Stainless steel load sensor
- Hermetically sealed, fully welded construction IP68 / IP69K
- 3000 divisions OIML R60 Class C
- Calibration in mV/V/ $\Omega$  by output current matching
- 5 year warranty
- High integrity cable gland
- Optional load foot for use in platform scales
- High durability Polyurethane cable

# 350Ti

technical specification...



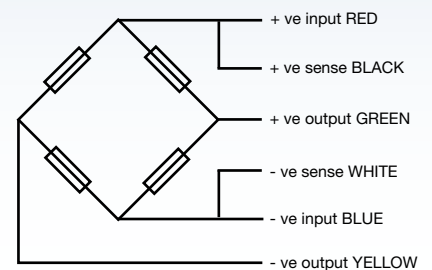
All dimensions in mm

## 350Ti Load Cell

	Load cell specification	Units
Load Cell Capacities	300, 500, 750, 1000, 1500, 2000	kg
Rated Output	2	mV/V
Accuracy Class	3000	n.OIML
Combined Error	< +/- 0.017	%*
Non-repeatability	< +/- 0.015	%*
Creep (30 minutes)	< +/- 0.016	%*
Temperature Effect on Zero Balance	< +/- 0.002	%* / °C
Temperature Effect on Span	< +/- 0.0012	%* / °C
Compensated Temperature Range	-10 to +40	°C
Operating Temperature Range	-30 to +70	°C
Safe Overload	150	%*
Ultimate Overload	200	%*
Zero Balance	< +/- 2	%*
Input Resistance	400	Ω +/- 20
Output Resistance	350	Ω +/- 3
Insulation Resistance	> 5000	MΩ @ 100V
Recommended Supply Voltage	10	V
Maximum Supply Voltage	15	V
Environmental Protection	IP68 / IP69K	
Cable Length	5	m
Maximum deflection at full load	0.2 - 0.4	mm
Nominal Shipping Weight	0.9	kg

\*With respect to rated output

\*\* Pre-corner adjustment optimised at +/- 0.05% by output current calibration



### Electrical Connections

Via 6 wire, 5.7mm diameter, screened polyurethane cable.

Screen not connected electrically to load cell.

### Options

Stainless steel/rubber load foot for use on platform scales

DISTRIBUTED BY:



## THAMES SIDE SENSORS LTD

Unit 10, io Trade Centre, Deacon Way, Reading, Berkshire RG30 6AZ

tel: +44 (0) 118 941 1387

fax: +44 (0) 118 941 2004

sales@thames-side.co.uk

www.thames-side.com

Issue: 350Ti.07.15



Our policy is one of continuous product enhancement. We therefore reserve the right to incorporate technical modifications without prior notification.



www.thames-side.com