

LA66 Anti-Vibration Mounts

Load cell with AV mount
for harsh industrial environments

capacities 10 kg to 300 kg



stainless steel load sensor and
loading assembly

3000 divisions OIML R60 Class C


hermetically sealed, fully welded
construction

5 year warranty

ease of installation

high integrity cable entry

sealed to IP68

available in  version

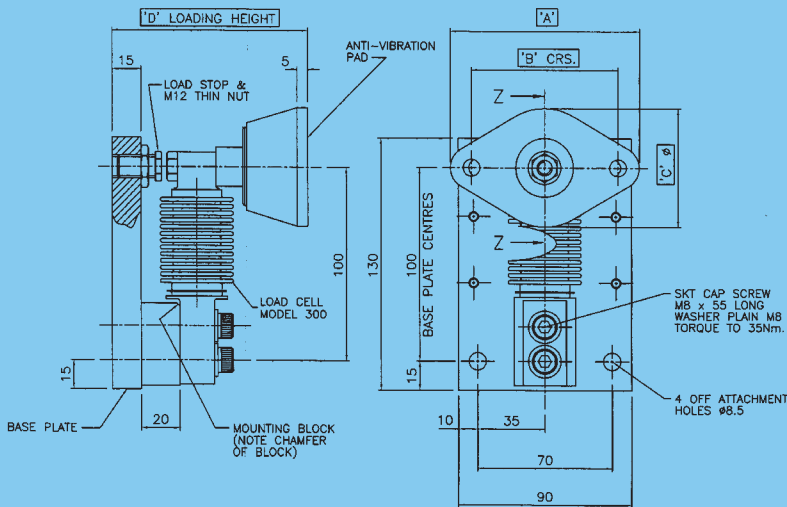
The fully welded stainless steel T66 load cells are hermetically sealed to IP68 and can be used in the harshest industrial environments. Thames Side's AV mounts are suitable for weighing platforms, bag fillers, belt weighers and tank weighing in the Food Processing, Chemical, Pharmaceutical and general Bulk Handling industries. Available with intrinsically safe certification ATEX EEx ia IIC T6 for use in both gas and dust zones. ATEX certification for use in dust zones 20, 21 and 22 without safety barriers is also available. For applications in aggressive environments where stress corrosion or acid attack is an issue, a special parylene coating can be specified as an option.

technical specification sheet

LA Anti-Vibration Mounts

	Load Cell Capacities	Units
	10, 20, 50, 100, 150, 200, 250, 300	kg
Rated Output	2	mV/V±0.1%
Accuracy Class	3000	n.OIML
Combined Error	<±0.017	%*
Non-repeatability	<±0.015	%*
Creep (30minutes)	<±0.016	%*
Temperature Effect on Zero Balance	<±0.002	%*/°C
Temperature Effect on Span	<±0.0012	%*/°C
Compensated Temperature Range	-10 to +40	°C
Operating Temperature Range	-20 to +50	°C
Safe Overload	150	%*
Ultimate Overload	200	%*
Zero Balance	<±1	%*
Input Resistance	400	Ω ± 20
Output Resistance	350	Ω ± 3
Insulation Resistance	>5000	M.Ω @ 100v
Recommended Supply Voltage	10	V
Maximum Supply Voltage	15	V
Environmental Protection	IP68	

*With respect to rated output



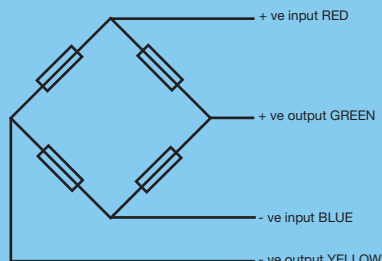
Capacity	A	B	C	D
20kg/50kg	79.4	60.3	44.5	95
100kg/200kg	98.4	76.2	60	103

All dimensions in mm. 2 Sizes of Rubber Pad also effects weight

Electrical Connections

Via 4 core, 3m, 5.7mm dia., screened polyurethane cable.

Screen not connected electrically to load cell.



Nominal shipping weight = 1kg

Construction

Load cell and loading assembly manufactured from 17-4PH stainless steel heat treated to H900 condition - 1379N/mm² UTS. Base-Stainless Steel

Our policy is one of continuous product enhancement. We therefore reserve the right to incorporate technical modifications without prior notification.

Distributed by



Thames Side Sensors Ltd

Unit 10, io Trade Centre, Deacon Way,
Reading, Berkshire RG30 6AZ
tel: +44 (0) 118 941 1387 fax: +44 (0) 118 941 2004
e-mail: sales@thames-side.co.uk
web: www.thames-side.com