

# Series T30 LA

## High capacity load cell assembly for silo and tank weighing

capacities 100 t - 600 t



Alloy steel load sensor

Tough epoxy painted mounting assembly

Construction sealed to IP67

High accuracy

Self-aligning weighing assembly

Thermal expansion compensation

Waterproof cable connector

Integral lift off prevention

Simple low cost installation

5 year warranty

An alloy steel, zinc plated, compression load cell with integral lift off prevention. The load cell assembly is ideal for general commercial weighing of tanks, silos and vessels. The design ensures optimum performance and eliminates many traditional problems encountered by engineers installing high capacity weighing systems. Supplied as a complete locked assembly ready to install.

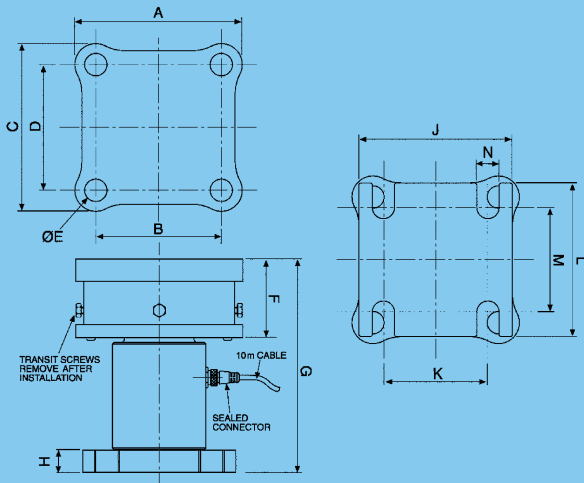
The special mounting plate readily accommodates misalignment and movement due to thermal expansion and contraction. The integral lift off protection can withstand forces up to 20% of load cell capacity making the unit ideal for exposed installations subject to strong winds.

# technical specification sheet

## Series T30 LA

	Load Cell Capacities	Units
Load Ranges	100, 200, 300, 400, 600	tonnes
Rated Output	2	mV/V±0.25%
Combined Error	<±0.010	%*
Non-repeatability	<±0.03	%*
Creep (30 minutes)	<±0.05	%*
Temperature Effect on Zero Balance	<±0.003	%*/°C
Temperature Effect on Span	<±0.005	%*/°C
Compensated Temperature Range	-10 to +40	°C
Operating Temperature Range	-40 to +80	°C
Safe Overload	150	%*
Ultimate Overload	300	%*
Maximum Lift Off	20	%*
Maximum Side Load	15	%*
Maximum Angular Misalignment	± 4°	Degrees
Zero Balance	< ± 2	%*
Input Resistance	750	Ω ± 30
Output Resistance	700	Ω ± 1.5
Insulation Resistance	>500	MΩ @ 100v DC
Recommended Supply Voltage	10	V
Maximum Supply Voltage	15	V
Cable Length	10	m
Protection Class	IP67	-

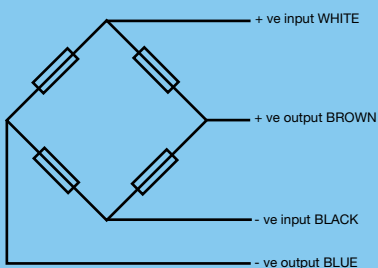
\*With respect to rated output



Capacity (t)	A	B	C	D	E	F	G	H	J	K	L	M	N	Wt (kg)
100	180	130	180	130	26	86	223	22	180	110	180	110	26	23
200	240	180	240	180	32	112	305	32	240	150	240	150	32	66
300, 400, 600	270	210	270	210	32	135	370.6	38	270	170	270	170	32	105

All dimensions in mm.

**Electrical Connections:** Via 4 core, 7/0.2mm (0.22mm<sup>2</sup>), screened polyurethane cable. Screen not connected electrically to load cell.



### Mechanical Connections

Via 8 off 18mmØ attachment holes - 4 in the top bracket and 4 in the platform base

### Construction

Load cell manufactured from high strength alloy steel, zinc plated. Brackets manufactured from iron spheroidal graphite castings and coated with epoxy paint.

Our policy is one of continuous product enhancement. We therefore reserve the right to incorporate technical modifications without prior notification.

Distributed by



### Thames Side Sensors Ltd

Unit 10, io Trade Centre, Deacon Way,  
Reading, Berkshire RG30 6AZ  
tel: +44 (0) 118 941 1387 fax: +44 (0) 118 941 2004  
e-mail: sales@thames-side.co.uk  
web: www.thames-side.com