

T34

Compression column load cell for silo weighing

capacities 100 tonnes – 600 tonnes



Stainless steel load sensor

Self-centering column design with anti-rotation pin

Hermetically welded and sealed to IP68

3 year warranty

In-built surge arrestors for lightning protection

1000 divisions OIML R60 Class C

Mounting accessories available

pre-corner adjustment optimised for multi-cell systems

Simple installation

ATEX version available

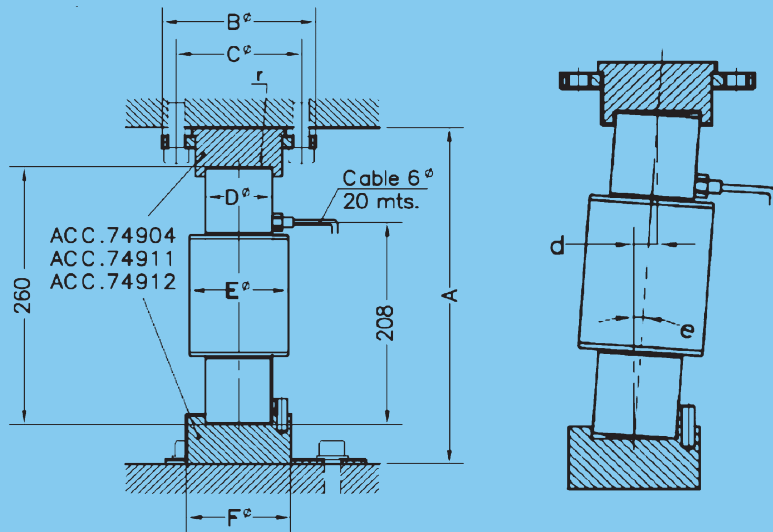
The Model T34 cell is designed specifically for high capacity silo weighing applications. For applications in aggressive environments where stress corrosion or acid attack is an issue, a special parylene coating can be specified as an option.

technical specification sheet

T34

	Load Cell Capacities	Units
Standard Load Ranges	100, 200, 400, 600	tonnes
Rated Output	2	mV/V±0.1%
Combined Error	<±0.05	%*
Non-repeatability	<±0.015	%*
Creep (30 minutes)	<±0.048	%*
Temperature Effect on Zero Balance	<±0.002	%*/°C
Temperature Effect on Sensitivity	<±0.0036	%*/°C
Compensated Temperature Range	0 to +50	°C
Operating Temperature Range	-30 to +70	°C
Safe Overload	150	%*
Ultimate Overload	300	%*
Zero Balance	<±2	%*
Input Resistance	800	Ω ± 5
Output Resistance	705	Ω ± 5
Insulation Resistance	>5000	MΩ @ 100v
Recommended Supply Voltage	10	V
Maximum Supply Voltage	15	V
Environmental Protection	IP68	-

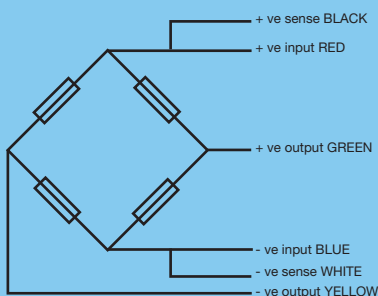
*With respect to rated output



Range	A	B	C	D	E	F	G	d. max.	e. max.	r. Radius Ball	Transport Weight kg
100 tonne	340	147	120	64	100	100	165	18	4"	290	11
200 tonne	340	147	120	64	100	100	165	9	2"	400	11
400 tonne	400	220	190	109	140	160	200	8	1.4"	700	23
600 tonne	440	220	190	119	140	160	200	8	1.4"	800	27

All dimensions in mm.

Electrical Connections



Shield: Not connected to transducer body

Construction

Load cell manufactured from stainless steel

Options

Mounting accessories.

T34 Mounting Accessories



Our policy is one of continuous product enhancement. We therefore reserve the right to incorporate technical modifications without prior notification.

Distributed by



Thames Side Sensors Ltd

Unit 10, io Trade Centre, Deacon Way,
Reading, Berkshire RG30 6AZ
tel: +44 (0) 118 941 1387 fax: +44 (0) 118 941 2004
e-mail: sales@thames-side.co.uk
web: www.thames-side.com