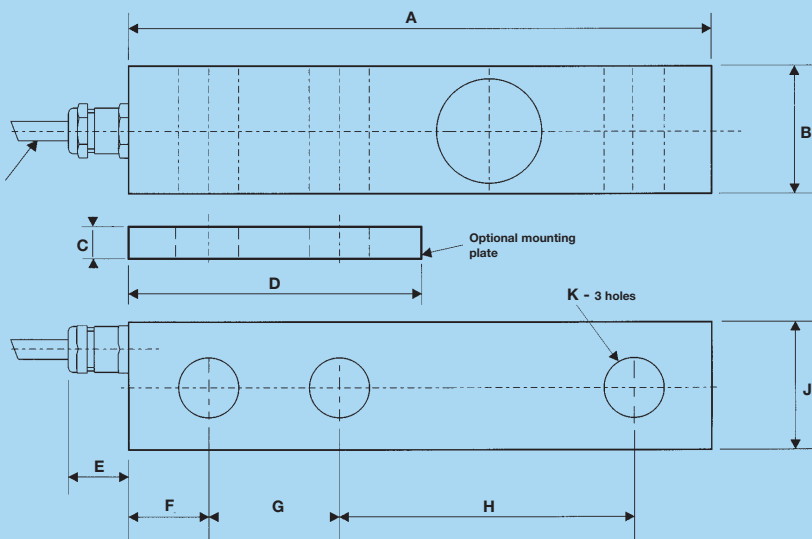


technical specification sheet

Series T63

	Load Cell Capacity			units
	500, 1000, 1500, 2000	5000	10000	kg
Standard Load Ranges	500, 1000, 1500, 2000	5000	10000	kg
Rated Output	3	3	3	mV/V \pm 0.25%
Combined Error	< \pm 0.03	< \pm 0.03	< \pm 0.03	%*
Non-repeatability	< \pm 0.015	< \pm 0.015	< \pm 0.015	%*
Creep (30 minutes)	< \pm 0.03	< \pm 0.03	< \pm 0.03	%*
Temperature Effect on Zero Balance	< \pm 0.0025	< \pm 0.0025	< \pm 0.0025	%* / $^{\circ}$ C
Temperature Effect on Span	< \pm 0.005	< \pm 0.005	< \pm 0.005	%* / $^{\circ}$ C
Compensated Temperature Range	-10 to +40	-10 to +40	-10 to +40	$^{\circ}$ C
Operating Temperature Range	-40 to +80	-40 to +80	-40 to +80	$^{\circ}$ C
Safe Overload	150	150	150	%*
Ultimate Overload	300	300	300	%*
Zero Balance	< \pm 1	< \pm 1	< \pm 1	%*
Input Resistance	380	380	380	Ω \pm 30
Output Resistance	350	350	350	Ω \pm 1.5
Insulation Resistance	>5000	>5000	>5000	M Ω @ 100V
Recommended Supply Voltage	10	10	10	V
Maximum Supply Voltage	15	15	15	V
Environmental Protection	IP 67	IP 67	IP 67	-

*All percentages are related to Full Rated Load

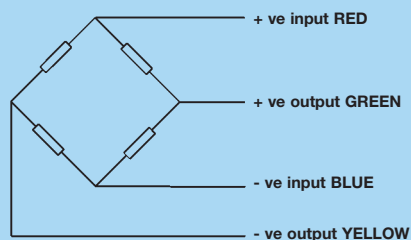


Capacity (kg)	A	B	C	D	E	F	G	H	J	K
500 - 2000	130	32	6	57	20	16	25.4	76.2	32	\varnothing 13.4
5000	171	41	6	76	20	19	38	95	41	\varnothing 21
10000	225	51	6	101	20	25	51	124	51	\varnothing 26

All dimensions in mm.

Electrical Connections

Via 4 core, 4m, 4mm dia., screened polyurethane cable.



Screen not connected electrically to load cell.

Shipping Weights: (kg)

500 - 2000 = 0.8kg

5000 = 1.9kg

10000 = 4.1kg

Construction

High quality tool steel and nickel plated

Options

Mounting plates, load buttons & anti-vibration loading assemblies

Our policy is one of continuous product enhancement. We therefore reserve the right to incorporate technical modifications without prior notification.

Distributed by

Thames Side - Maywood

Thames Side-Maywood Limited

17 Stadium Way, Reading

Berkshire RG30 6BX UK

Tel: +44(0)118 9458200

Fax: +44(0)118 9458225

E-mail: sales@thames-side.co.uk

Web: www.thames-side.co.uk

A
HALMA
GROUP
COMPANY

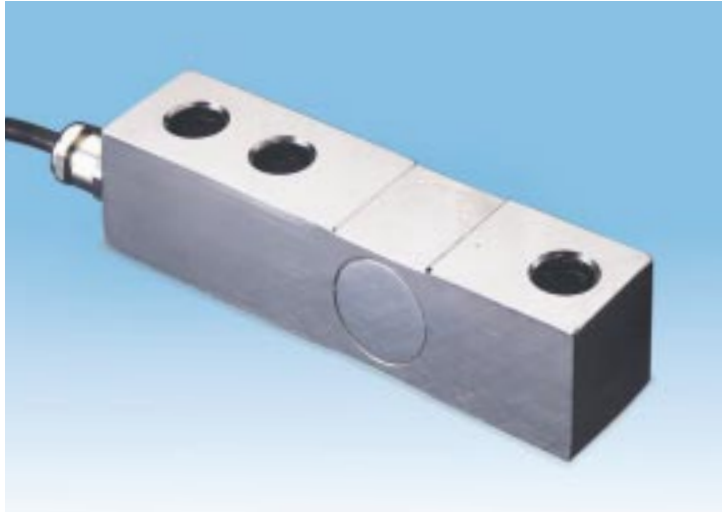


Approval No. 925394

Series T63

Shear beam load cell for industrial weighing

capacities 500 kg to 10,000 kg



high quality steel load sensor

industry standard configuration

fully potted and sealed to IP 67

1 year warranty

corrosion resistant

optional mounting plates, load buttons & supports

simple low cost installation

optional anti-vibration loading assembly available

This shear beam load cell is manufactured from high quality tool steel, nickel plated and fully sealed to IP67.

The cell is typically used in weigh platforms, tank and vessel weighing, bag filling machines and conveyors.

Thames Side - Maywood

...your specialist load cell partner