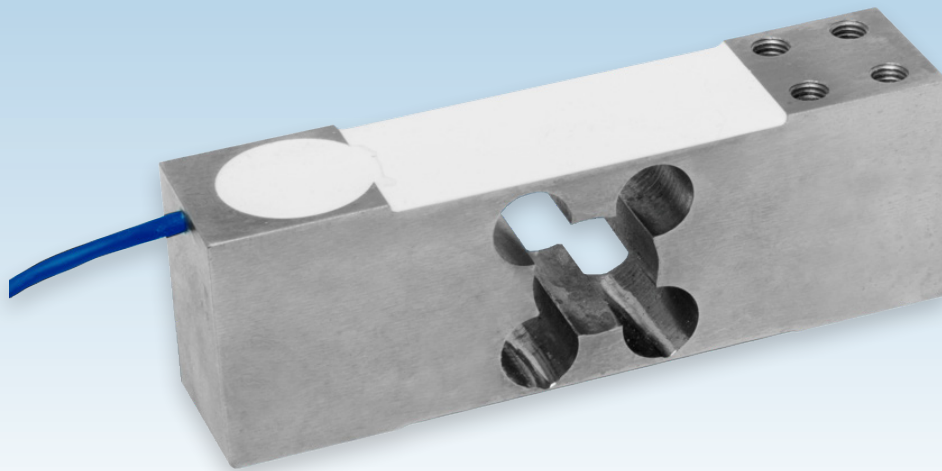


# T12A



## SINGLE POINT LOAD CELL

capacities 50kg - 400kg



The T12A double bending beam single point load cell is ideal for high accuracy weight measurement with off-centre loads when the environment does not require stainless steel. Its nickel plated alloy steel construction, with silicone sealing to IP66, provides a cost-effective solution that is approved to 4000 divisions OIML R60 Class C. As standard, the T12A is supplied with a screened polyurethane cable; this provides a higher level of resistance to cuts and damage than a PVC cable.

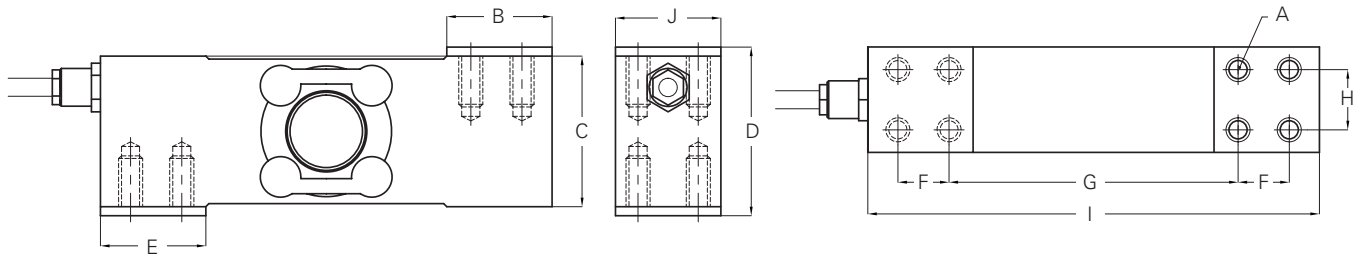
Typical applications include weighing platforms with dimensions up to 800mm x 800mm; bagging, filling and dosing machines; medical scales; checkweighers; small bucket and hopper systems.

- Nickel plated alloy steel load sensor
- Silicone sealed to IP66
- OIML R60 Class C 4000 divisions (C4)
- Cost-effective solution
- 5 year warranty
- High accuracy with off-centre loads
- 600x600 mm or 800x800 mm platform size (with load cell placed centrally under the platform)
- High durability Polyurethane cable provides higher resistance to chemicals than PVC



# T12A

technical specification...



Qty. 2 spacer plates supplied with load cell, as shown above

## T12A Load Cell

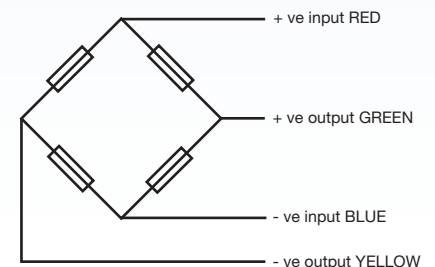
	Load cell specifications	Units	
<b>Load Cell Capacities</b>	50, 75, 120, 200, 250, 350, 400	kg	
<b>Accuracy Class</b>	4000	n.OIML	
<b>Rated Output</b>	2	mV/V +/- 10%	
<b>Combined Error</b>	< +/- 0.017	%*	
<b>Non-repeatability</b>	< +/- 0.01	%*	
<b>Creep (30 minutes)</b>	< +/- 0.016	%*	
<b>Temperature Effect on Zero Balance</b>	< +/- 0.002	%* / °C	
<b>Temperature Effect on Span</b>	< +/- 0.0012	%* / °C	
<b>Compensated Temperature Range</b>	-10 to +40	°C	
<b>Operating Temperature Range</b>	-20 to +70	°C	
<b>Minimum Dead Load</b>	0	%*	
<b>Safe Overload</b>	150	%**	
<b>Ultimate Overload</b>	200	%**	
<b>Zero Balance</b>	< +/- 2	%*	
<b>Maximum Deflection at Nominal Capacity</b>	0.3 to 0.5	mm	
<b>Input Resistance</b>	400	Ω +/- 20	
<b>Output Resistance</b>	350	Ω +/- 3	
<b>Insulation Resistance</b>	> 5000	MΩ @ 100V	
<b>Recommended Supply Voltage</b>	10	V	
<b>Maximum Supply Voltage</b>	15	V	
<b>Environmental Protection</b>	IP66		
<b>Cable Length</b>	5	m	
<b>Maximum Platform Size*</b>	<b>50, 75, 120, 200, 350 kg</b>	600 x 600	mm
	<b>250, 400 kg</b>	800 x 800	
<b>Nominal Shipping Weight</b>	<b>50, 75, 120, 200, 350 kg</b>	1.8	kg
	<b>250, 400 kg</b>	4.3	

- \* With respect to rated output
- \*\* Only applies to central loads on the load cell. Not for off-centre loads.
- \* The load cell must be placed centrally under the platform.

## Dimensions

Capacity (kg)	50, 75, 120, 200, 350	250, 400
A	8 off M8 x 1.25 x 14	8 off M10 x 1.5 x 20
B	35	50
C	50	60
D	56	66
E	35	50
F	17	30
G	96	100
H	20	40
I	150	180
J	35	60

Dimensions in mm



## Electrical Connections

Via 4 wire, 5.7mm diameter, screened polyurethane cable.  
Screen not connected electrically to load cell.

DISTRIBUTED BY:



## THAMES SIDE SENSORS LTD

Unit 10, io Trade Centre, Deacon Way, Reading, Berkshire RG30 6AZ

tel: +44 (0) 118 941 1387  
fax: +44 (0) 118 941 2004

sales@thames-side.co.uk  
www.thames-side.com



Issue: T12A.12.16

Our policy is one of continuous product enhancement. We therefore reserve the right to incorporate technical modifications without prior notification.

